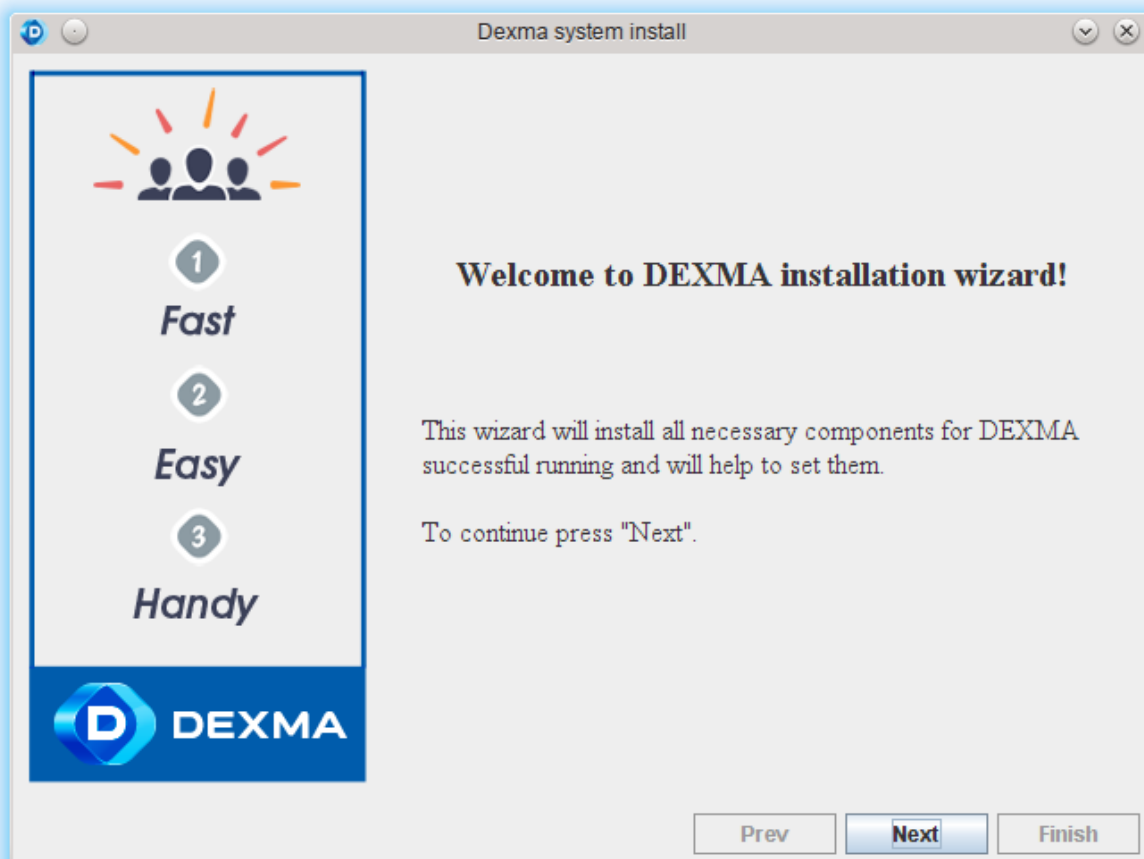
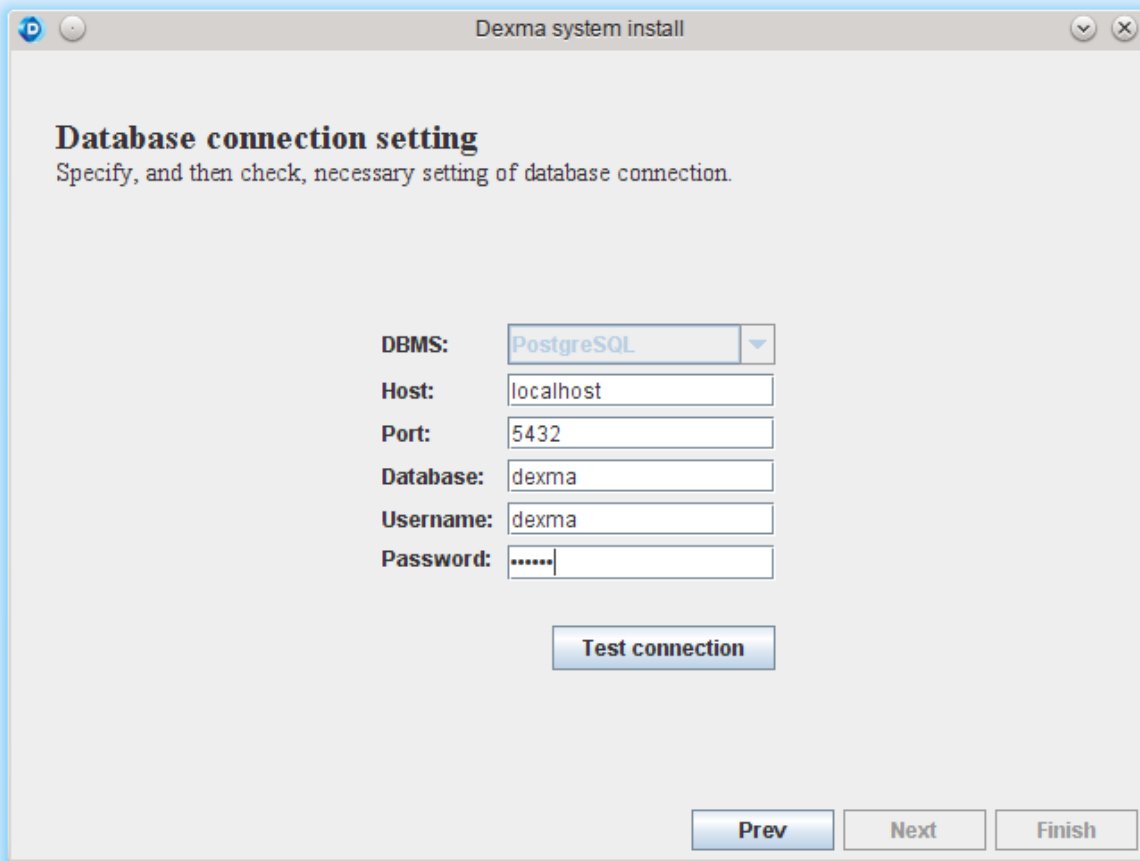


Step by step guide for downloading and installing DEXMA Program

1. Install Java Development Kit (<http://www.java.com>)
2. Install PostgreSQL DBMS from web-site <http://www.postgresql.org/>
3. In PostgreSQL create database and User who will have access to the database, which will be used by Dexma Program.
4. Download Dexma distribution package from web-site <http://dexma-plm.com/en/support/downloads/>
5. Unpack archive with distribution package.
6. Now go to the directory with unpacked distribution package.
7. Run file **setup.jar** (if applications are not connected with jar-files then run **setup.jar** with **java-jar** but first go to the directory with distribution package). **You need administrative permission to proceed with the installation!**
If you make installation on OC Windows it's possible to start installation with exe-file. Please go to the directory with distribution package and click right mouse button on file **setup.exe** and choose "**Run as administrator**"
8. Now press "Next"



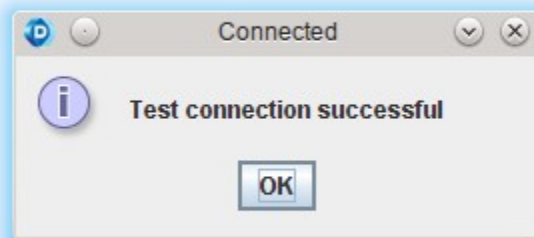
9. Please fill in fields and press “**Test connect**” to check if filled data is correct.



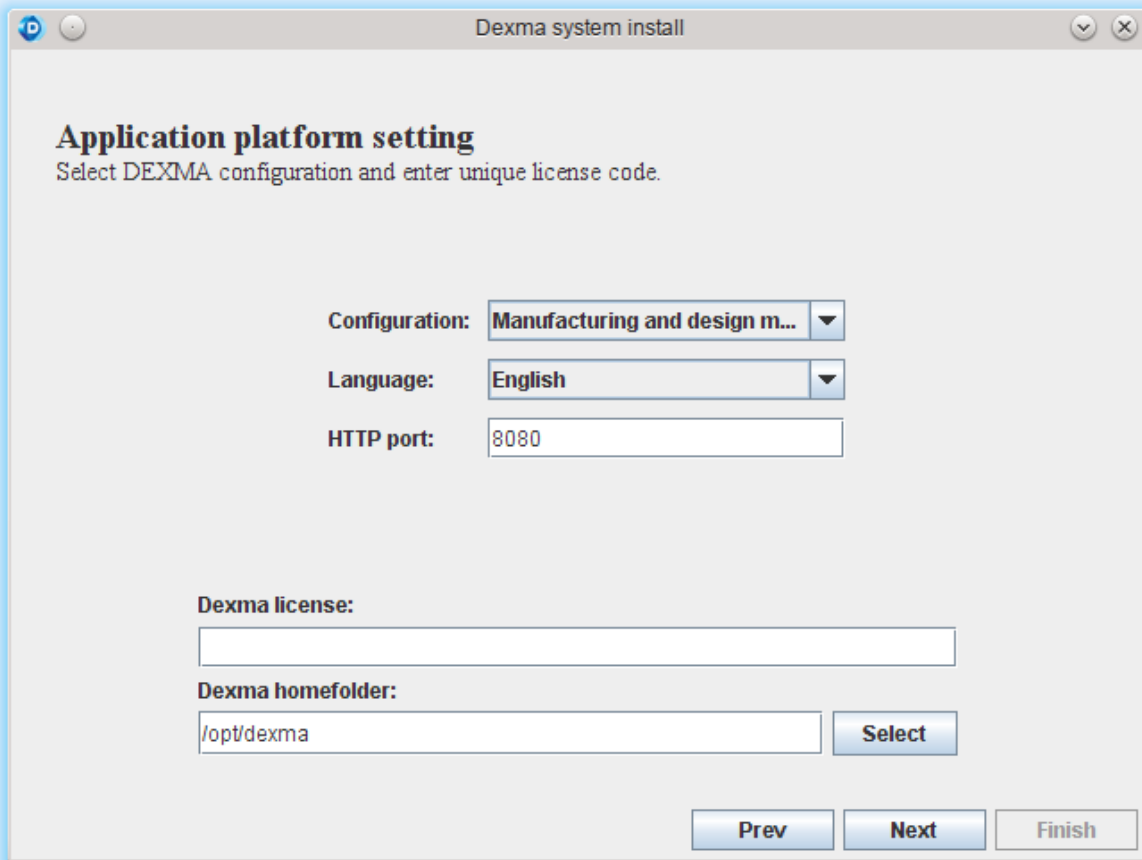
The screenshot shows a window titled "Dexma system install" with a sub-header "Database connection setting" and the instruction "Specify, and then check, necessary setting of database connection." The form contains the following fields:

- DBMS: PostgreSQL (dropdown menu)
- Host: localhost
- Port: 5432
- Database: dexma
- Username: dexma
- Password: (masked)

A "Test connection" button is located below the password field. At the bottom right of the window are three buttons: "Prev", "Next", and "Finish".



10. Select DEXMA configuration, language and HTTP port in which system will work (for Linux indicate port >1024 or contact tech support for help and additional instructions). Please check that indicated port is free.



The screenshot shows a window titled "Dexma system install" with the following content:

Application platform setting
Select DEXMA configuration and enter unique license code.

Configuration: Manufacturing and design m...
Language: English
HTTP port: 8080

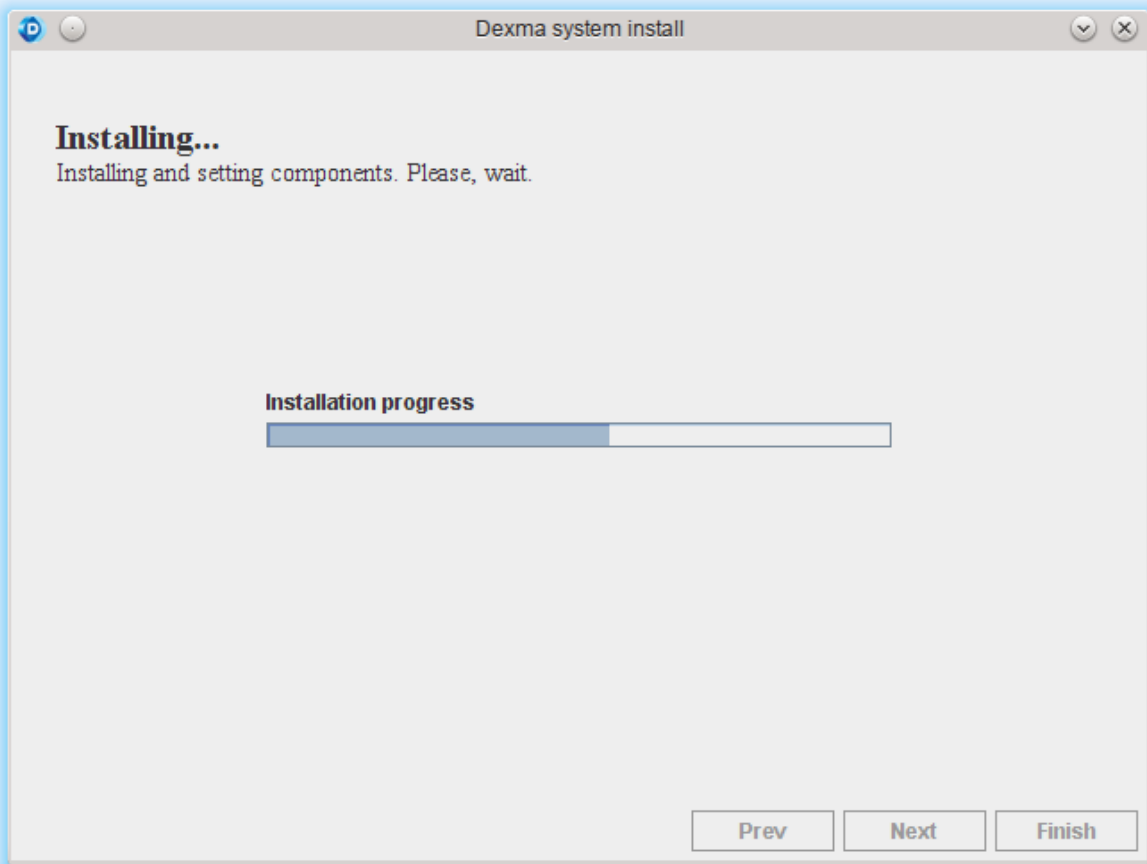
Dexma license:

Dexma homefolder:

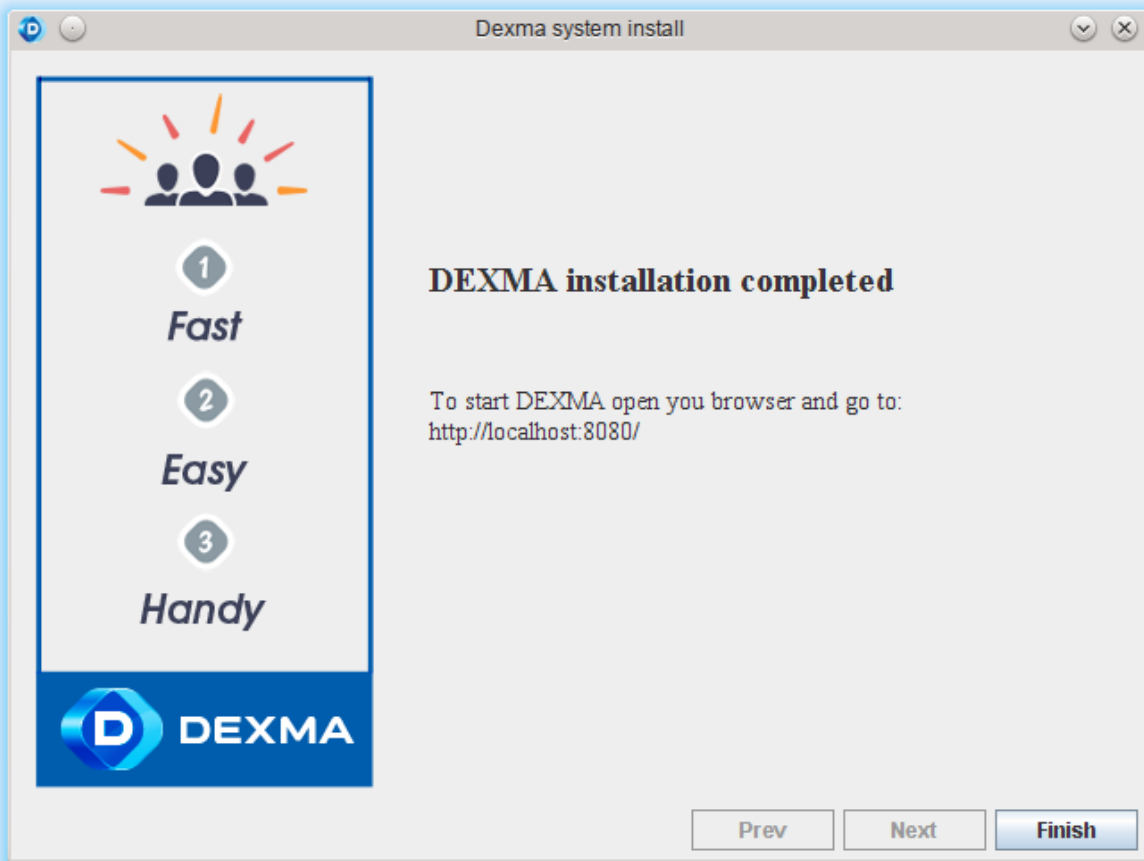
Prev Next Finish

If you've already purchased the product - please fill in license key in appropriate field. If you haven't received the key - please leave the field empty. Please indicate directory where the program will be installed. Press "Next"

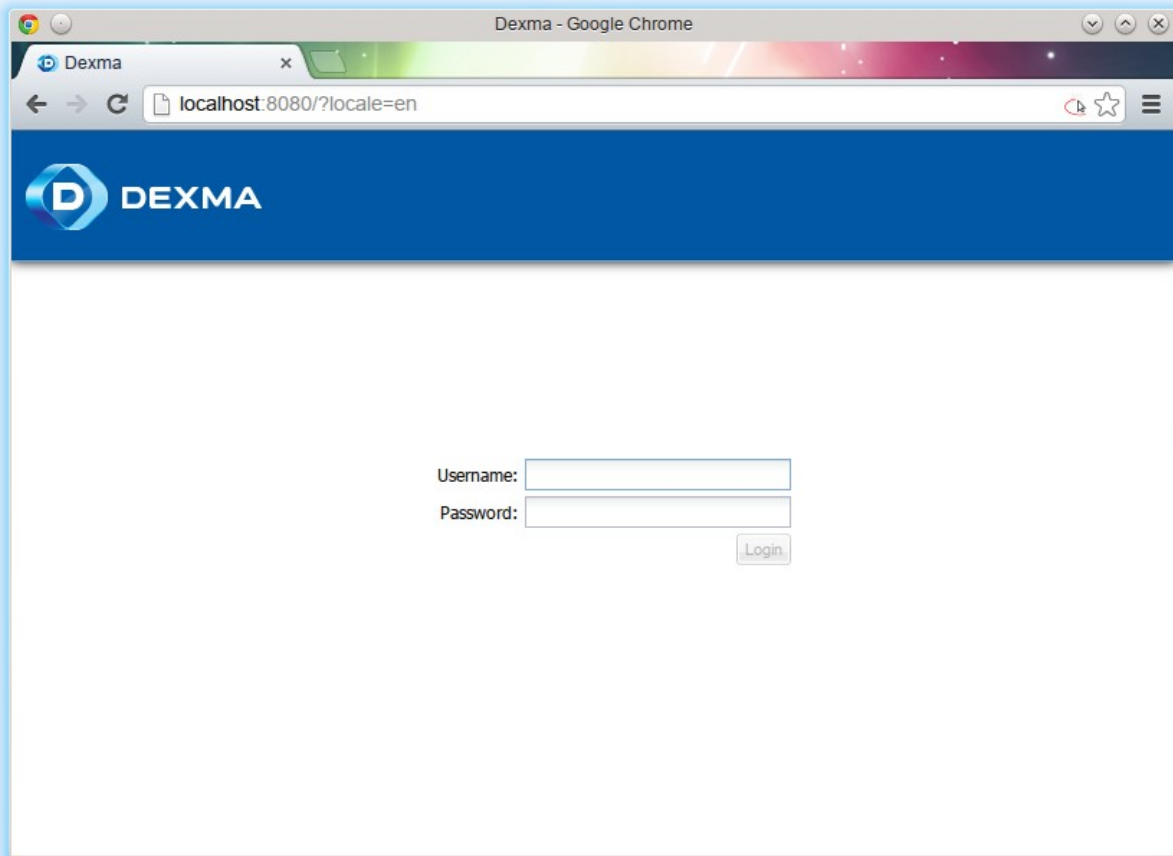
11. Please wait until the installation is completed.



12. Press **“Finish”**



13. Please open in browser web-page <http://localhost:8080/>



14. For the first entry please use Username **administrator** and Password **12345**

15. Change password

16. Please use program help -question mark in the right upper corner of the screen or use the link <http://localhost:8080/help/mash/en/index.html>

We wish you enjoy working in DEXMA!